

Aflac Choice

HOSPITAL CONFINEMENT INDEMNITY INSURANCE – OPTION 1

We've been dedicated to helping provide peace of mind and financial security for more than 60 years.



The policy is a supplement to health insurance and is not a substitute for major medical coverage. Lack of major medical coverage (or other minimum essential coverage) may result in an additional payment with your taxes.

Aflac SmartClaim®
One Day Pay™

AFLAC CHOICE

HOSPITAL CONFINEMENT INDEMNITY INSURANCE – OPTION 1

Policy Series B40000



Life is full of tough choices, but this isn't one of them.

Aflac Choice makes selecting the right coverage easier and less stressful. With your trusted Aflac agent you can tailor Aflac Choice to meet your specific needs and enhance your existing coverage. Choose the options you want and ignore the rest.

Here's how we can help

Aflac Choice offers our best selection of hospital-related benefits to help with the expenses not covered by major medical, which can help prevent high deductibles and out-of-pocket expenses from derailing your life plans.

If choosing the right coverage has given you one giant headache in the past, don't worry. We're here to help.

Why Aflac Choice may be the right policy for you

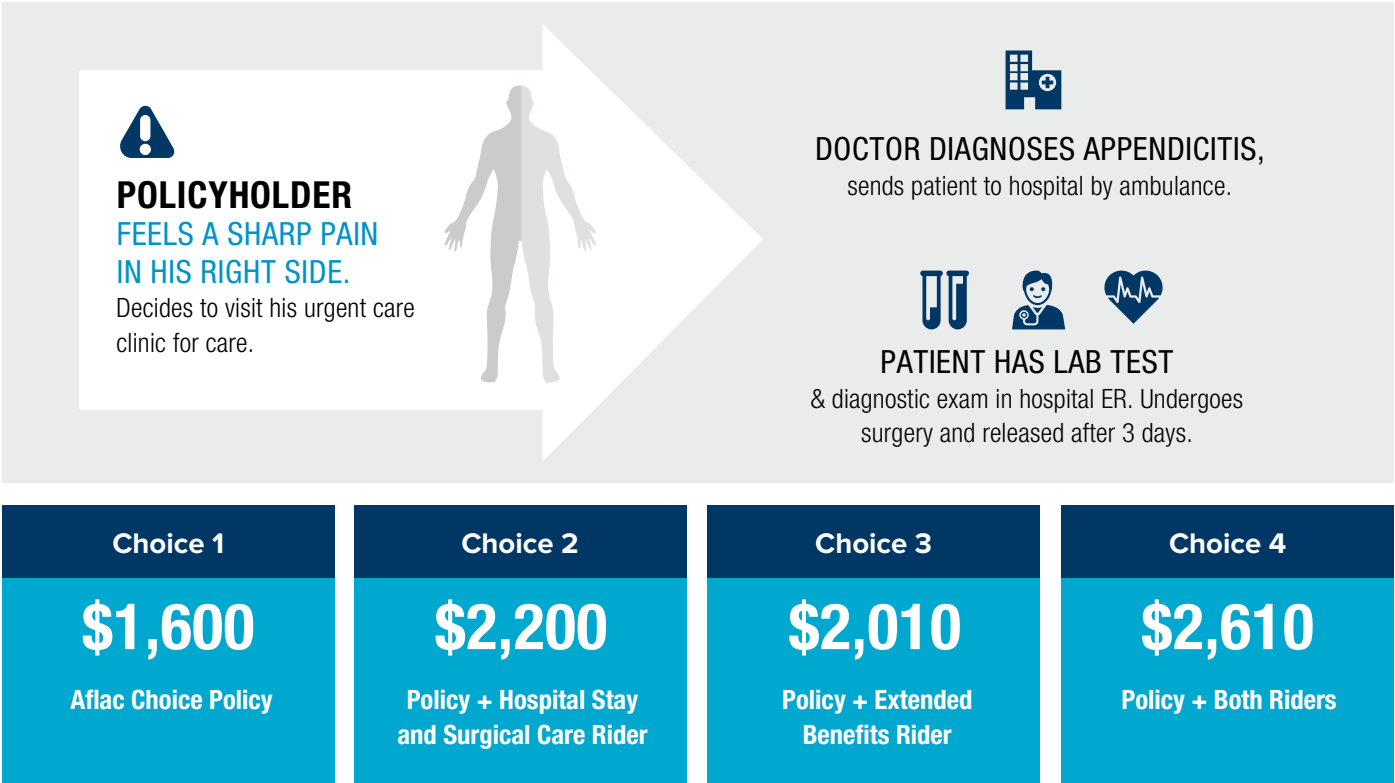
- It's customizable. You choose the plan that's right for you based on your specific needs. It also works well with our other products.
- Guaranteed-issue options available—that means there is no medical questionnaire required.
- We pay cash directly to you (unless you tell us otherwise)—not the doctor or hospital.



Understand the difference Aflac makes in your financial security.

Aflac pays cash benefits directly to you, unless otherwise assigned, for covered hospital expenses. We provide you with financial resources to help you overcome some of the unexpected expenses associated with a visit to the hospital, giving you less to worry about so you can focus your energy on getting better.

How it works



The above example is based on four scenarios. **Choice 1 Scenario:** Policyholder has the Aflac Choice policy only; includes a Hospital Confinement Benefit of \$1,500 and a Hospital Emergency Room Benefit of \$100. **Choice 2 Scenario:** Policyholder has the Aflac Choice policy plus the Hospital Stay and Surgical Care Rider; includes the benefit amounts from Choice 1 Scenario (shown above), plus an Initial Assistance Benefit of \$100, a Surgery Benefit (appendectomy) of \$200, and a Daily Hospital Confinement Benefit of \$300 (hospitalized for 3 days). **Choice 3 Scenario:** Policyholder has the Aflac Choice policy plus the Extended Benefits Rider; includes the benefit amounts from Choice 1 Scenario (shown above), plus a Physician Visit Benefit of \$25, a Laboratory Test and X-Ray Benefit of \$35, a Medical Diagnostic and Imaging Exams Benefit of \$150, and an Ambulance Benefit of \$200 (ground). **Choice 4 Scenario:** Policyholder has the Aflac Choice policy plus both the Extended Benefits Rider and the Hospital Stay and Surgical Care Rider; includes the benefit amounts from Choice 1 Scenario (shown above), plus a Physician Visit Benefit of \$25, a Laboratory Test and X-Ray Benefit of \$35, a Medical Diagnostic and Imaging Exams Benefit of \$150, an Ambulance Benefit of \$200 (ground), an Initial Assistance Benefit of \$100, a Surgery Benefit (appendectomy) of \$200, and a Daily Hospital Confinement Benefit of \$300 (hospitalized for 3 days). Benefits may vary by state and benefit option selected. The policy has limitations and exclusions that may affect benefits payable. This brochure is for illustrative purposes only. Refer to the policy for benefit details, definitions, limitations, and exclusions.

Coverage Options

Choose the Policy and Riders that Fit Your Needs

BENEFIT	DESCRIPTION
HOSPITAL CONFINEMENT	Pays \$500; \$1,000; \$1,500; or \$2,000. You choose the benefit amount at the time of application. Payable once per calendar year, per covered person.
REHABILITATION FACILITY	Pays \$100 per day; limited to 15 days per confinement. Limited to 30 days per calendar year, per covered person.
HOSPITAL EMERGENCY ROOM	Pays \$100 for treatment in a hospital emergency room. Limited to 2 payments per calendar year, per covered person.
HOSPITAL SHORT-STAY	Pays \$100 for hospital stays of less than 23 hours. Limited to 2 payments per calendar year, per policy.
WAIVER OF PREMIUM	Yes
CONTINUATION OF COVERAGE	Yes

OPTIONAL RIDERS	DESCRIPTION		
EXTENDED BENEFITS RIDER	<p>Physician Visit Benefit: Pays \$25 for visits (including telemedicine) to a physician, psychologist or urgent care center.</p> <table><tr><td><p>Individual Coverage: Limited to 3 visits per calendar year, per policy.</p></td><td><p>Insured/Spouse & Family Coverage: Limited to 6 visits per calendar year, per policy.</p></td></tr></table>	<p>Individual Coverage: Limited to 3 visits per calendar year, per policy.</p>	<p>Insured/Spouse & Family Coverage: Limited to 6 visits per calendar year, per policy.</p>
	<p>Individual Coverage: Limited to 3 visits per calendar year, per policy.</p>	<p>Insured/Spouse & Family Coverage: Limited to 6 visits per calendar year, per policy.</p>	
<p>Laboratory Test and X-Ray Benefit: Pays \$35; limited to 2 payments per covered person, per calendar year.</p> <p>Medical Diagnostic and Imaging Exams Benefit: Pays \$150 for a covered exam, limited to 2 exams per covered person, per calendar year. Benefits payable for a variety of medical diagnostic and imaging exams, including sleep studies.</p> <p>Ambulance Benefit: Pays \$200 (ground) or \$2,000 (air) for transportation to or from a hospital. The benefit is limited to two trips, per calendar year, per covered person.</p>			
HOSPITAL STAY AND SURGICAL CARE RIDER	<p>Initial Assistance Benefit: Pays \$100 once per calendar year, per rider, when a covered person requires a hospital admission.</p> <p>Surgery Benefit: Pays \$50-\$1,000 for a covered surgery. Limited to one payment per 24-hour period, per covered person.</p> <p>Invasive Diagnostic Exams Benefit: Pays \$100 for one covered exam, per covered person, per 24-hour period.</p> <p>Hospital Intensive Care Unit Confinement Benefit: Pays \$500 per day, per covered person, for up to 30 days.</p> <p>Daily Hospital Confinement Benefit: Pays \$100 per day, per covered person, for up to 365 days.</p> <p>Second Surgical Opinion Benefit: Pays \$50 once per covered person, per calendar year.</p>		

REFER TO THE FOLLOWING PAGES AND POLICY FOR COMPLETE BENEFIT DETAILS, DEFINITIONS, LIMITATIONS AND EXCLUSIONS.

AFLAC CHOICE COVERAGE

American Family Life Assurance Company of Columbus
(herein referred to as Aflac)
Worldwide Headquarters • 1932 Wynnton Road • Columbus, Georgia 31999
Toll-Free 1.800.99.AFLAC (1.800.992.3522)

**The policy provides supplemental coverage
and will be issued only to supplement insurance already in force.**

LIMITED BENEFIT, HOSPITAL CONFINEMENT INDEMNITY INSURANCE
Policy Form Series B40100

- 1. Read Your Policy Carefully:** This document provides a very brief description of some of the important features of the policy. This is not the insurance contract and only the actual policy provisions will control. The policy itself sets forth, in detail, the rights and obligations of both you and Aflac. It is, therefore, important that you READ YOUR POLICY CAREFULLY.
- 2. Hospital Confinement Indemnity Coverage:** The policy provides coverage in the form of a fixed benefit during periods of hospitalization or care resulting from Sickness or Injury, subject to any limitations set forth in your policy. It does not provide any benefits other than the fixed indemnity for Hospital Confinement and any additional benefits described below.
- 3. Benefits:** Aflac will pay the following benefits, as applicable, for a covered Sickness or Injury that occurs while coverage is in force, subject to the Pre-existing Condition Limitations, Limitations and Exclusions, and all other policy provisions, unless indicated otherwise. The term "Hospital Confinement" does not include emergency rooms. Treatment or confinement in a U.S. government Hospital does not require a charge for benefits to be payable.
- A. HOSPITAL CONFINEMENT BENEFIT:** Aflac will pay \$[] when a Covered Person requires Hospital Confinement for 23 or more hours for a covered Sickness or Injury and a room charge is incurred. This benefit is payable once per Calendar Year, per Covered Person. No lifetime maximum.
- B. REHABILITATION FACILITY BENEFIT:** Aflac will pay \$100 per day when a Covered Person is confined in a Hospital and is transferred to a room in a Rehabilitation Facility for treatment of a covered Sickness or Injury and a charge is incurred each day for such treatment. This benefit is limited to 15 days per Period of Hospital Confinement and is limited to a Calendar Year maximum of 30 days, per Covered Person. No lifetime maximum.
- C. HOSPITAL EMERGENCY ROOM BENEFIT:** Aflac will pay \$100 when a Covered Person receives treatment for a covered Sickness or Injury in a Hospital Emergency Room, including triage, and a charge is incurred for such treatment. This benefit is payable twice per Calendar Year, per Covered Person. No lifetime maximum.
- The Hospital Emergency Room Benefit and the Hospital Short-Stay Benefit are not payable on the same day.**
- D. HOSPITAL SHORT-STAY BENEFIT:** Aflac will pay \$100 when a Covered Person receives treatment for a covered Sickness or Injury in a Hospital, including an observation room, or an Ambulatory Surgical Center, for a period of less than 23 hours and a charge is incurred for such treatment. This benefit is not payable for treatment received in a Hospital Emergency Room or

Urgent Care Center. This benefit is payable twice per Calendar Year, per policy. No lifetime maximum.

The Hospital Short-Stay Benefit and the Hospital Emergency Room Benefit are not payable on the same day.

- E. WAIVER OF PREMIUM BENEFIT:** Upon written notice, Aflac will waive from month to month any premium(s) falling due during a continued Period of Hospital Confinement for the Named Insured only. This benefit will begin after the Period of Hospital Confinement for the Named Insured has exceeded 30 consecutive days. When such continued Period of Hospital Confinement has ended, premium payments must be resumed. Once premium payments are resumed, any new Period of Hospital Confinement must again satisfy the 30-day continued confinement for premiums to be waived.
- If you die and your Spouse becomes the new Named Insured, premiums will start again at the appropriate rate and will be due on the first premium due date after the change. The new Named Insured will then be eligible for this benefit if the need arises.
- F. CONTINUATION OF COVERAGE BENEFIT:** Aflac will waive all monthly premiums due for the policy and riders, if any, for up to two months if you meet all of the following conditions:
1. Your policy has been in force for at least six months;
 2. We have received premiums for at least six consecutive months;
 3. Your premiums have been paid through payroll deduction and you leave your employer for any reason;
 4. You or your employer notifies us in writing within 30 days of the date your premium payments cease because of your leaving employment; and
 5. You re-establish premium payments through:
(a) Your new employer's payroll deduction process or
(b) Direct payment to Aflac.

You will again become eligible to receive this benefit after:

1. You re-establish your premium payments through payroll deduction for a period of at least six months, and
2. We receive premiums for at least six consecutive months.

"Payroll deduction" means your premium is remitted to Aflac for you by your employer through a payroll deduction process or any other method agreed to by Aflac and the employer.

4. Optional Benefits:

EXTENDED BENEFITS RIDER: (SERIES B40050)

Applied for ☐ Yes ☐ No

Aflac will pay the following benefits, as applicable, for a covered Sickness or Injury that occurs while coverage is in force, subject to the Pre-existing Condition Limitations, Limitations and Exclusions, and all other policy provisions, unless indicated otherwise. The term "Hospital Confinement" does not include emergency rooms. Treatment or confinement in a U.S. government Hospital does not require a charge for benefits to be payable.

- A. PHYSICIAN VISIT BENEFIT:** Aflac will pay \$25 when a Covered Person incurs a charge for a visit (including a Telemedicine Visit) to a Physician, Psychologist, or Urgent Care Center. Services must be under the supervision of a Physician or Psychologist. If the Type of Coverage for the policy is Individual, the benefit is limited to three visits per Calendar Year, per policy. If the Type of Coverage is Named Insured/Spouse Only, One-Parent Family, or Two-Parent Family, the benefit is limited to a total of six visits per Calendar Year, per policy. No lifetime maximum.

The Sickness or Injury of a Covered Person is not required for the Physician Visit Benefit to be payable. This benefit is not subject to the Pre-existing Condition Limitations or Limitations and Exclusions section of the policy. No lifetime maximum.

- B. LABORATORY TEST AND X-RAY BENEFIT:** Aflac will pay \$35 when a Covered Person requires, and incurs a charge for, a laboratory test or an X-ray. The laboratory test or X-ray must be performed in a Hospital, Medical Diagnostic Imaging Center, Physician's office, an Urgent Care Center, or an Ambulatory Surgical Center. This benefit is limited to two payments per Covered Person, per Calendar Year. **The Laboratory Test and X-Ray Benefit is not payable for exams listed in the Medical Diagnostic and Imaging Exams Benefit.** No lifetime maximum.

The Sickness or Injury of a Covered Person is not required for the Laboratory Test and X-ray Benefit to be payable. This benefit is not subject to the Pre-existing Condition Limitations or Limitations and Exclusions section of the policy. No lifetime maximum.

- C. MEDICAL DIAGNOSTIC AND IMAGING EXAMS BENEFIT:** Aflac will pay \$150 when a Covered Person requires, and incurs a charge for, one of the following exams: computerized tomography (CT or CAT scan), magnetic resonance imaging (MRI), electroencephalogram (EEG), Sleep Study, thallium stress test, myelogram, angiogram, or arteriogram. These exams must be performed in a Hospital, Medical Diagnostic Imaging Center, Physician's office, Sleep Center, an Urgent Care Center, or an Ambulatory Surgical Center. This benefit is limited to two payments per Calendar Year, per Covered Person. No lifetime maximum.

- D. AMBULANCE BENEFIT:** Aflac will pay \$200 if, due to a covered Sickness or Injury, a Covered Person requires, and incurs a charge for, ground ambulance transportation to or from a Hospital. If a Covered Person requires, and incurs a charge for, air ambulance transportation to or from a Hospital due to a covered Sickness or Injury, Aflac will pay \$2,000. A licensed professional ambulance company must provide the ambulance

service. The Ambulance Benefit is limited to two trips per Calendar Year, per Covered Person. No lifetime maximum.

HOSPITAL STAY AND SURGICAL CARE RIDER: (SERIES B40051)

Applied for ☐ Yes ☐ No

Aflac will pay the following benefits, as applicable, for a covered Sickness or Injury that occurs while coverage is in force, subject to the Pre-existing Condition Limitations, Limitations and Exclusions, and all other policy provisions, unless indicated otherwise. The term "Hospital Confinement" does not include emergency rooms. Treatment or confinement in a U.S. government Hospital does not require a charge for benefits to be payable.

- A. INITIAL ASSISTANCE BENEFIT:** Aflac will pay \$100 when a Covered Person requires a Hospital Admission. This benefit is payable once per Calendar Year, per rider. No lifetime maximum. This benefit is not subject to the Pre-existing Condition Limitations or the Limitations and Exclusions section of the policy. **Payment of this benefit is based solely on a Covered Person's Hospital Admission, as defined in the rider. Any additional benefits that may be due as a result of a Hospital Admission remain subject to the terms of the policy, including any limitations and/or exclusions.**

- B. SURGERY BENEFIT:** Aflac will pay according to the benefits in the Schedule of Operations in the rider when, due to a covered Sickness or Injury, a Covered Person has a surgical procedure, including a vaginal or cesarean delivery, performed in a Hospital or an Ambulatory Surgical Center and a charge is incurred for such surgical procedure. If any surgical procedure for the treatment of the covered Sickness or Injury is performed other than those listed, Aflac will pay an amount comparable to the amount shown in the Schedule of Operations for the surgical procedure most nearly similar in severity and gravity. **The Surgery Benefit is only payable one time per 24-hour period, even though more than one surgical procedure may be performed. The highest eligible benefit will be paid. Exams covered under the Invasive Diagnostic Exams Benefit are not payable under this benefit. The Surgery Benefit and the Invasive Diagnostic Exams Benefit are not payable on the same day. The highest eligible benefit will be paid. No lifetime maximum.**

IMPORTANT: The Surgery Benefit is not payable for surgical procedures performed in a Physician's or dentist's office, a clinic, or other such location.

- C. INVASIVE DIAGNOSTIC EXAMS BENEFIT:** Aflac will pay \$100 when a Covered Person requires one of the following exams, with or without biopsy, and a charge is incurred: arthroscopy, bronchoscopy, colonoscopy, cystoscopy, endoscopy, gastroscopy, laparoscopy, laryngoscopy, sigmoidoscopy, or esophagoscopy. These exams must be performed in a Hospital or an Ambulatory Surgical Center. This benefit is limited to one exam per Covered Person, per 24-hour period. No lifetime maximum.

The Invasive Diagnostic Exams Benefit and the Surgery Benefit are not payable on the same day. The highest eligible benefit will be paid.

D. HOSPITAL INTENSIVE CARE UNIT CONFINEMENT BENEFIT:

Aflac will pay \$500 per day when a Covered Person incurs a room charge for a Period of Hospital Intensive Care Unit Confinement for a covered Sickness or Injury. This benefit is payable in addition to the Hospital Confinement Benefit and the Daily Hospital Confinement Benefit. The maximum benefit period for any one Period of Hospital Intensive Care Unit Confinement is 30 days. No lifetime maximum.

E. DAILY HOSPITAL CONFINEMENT BENEFIT: Aflac will pay \$100 per day for the Period of Hospital Confinement when a Covered Person requires Hospital Confinement for a covered Sickness or Injury and a room charge is incurred. This benefit is payable in addition to the Hospital Confinement Benefit. The maximum benefit period for any one Period of Hospital Confinement is 365 days. No lifetime maximum.

F. SECOND SURGICAL OPINION BENEFIT: Aflac will pay \$50 when a charge is incurred for a second surgical opinion by a Physician concerning surgery for a covered Sickness or Injury. This benefit is payable once per Calendar Year, per Covered Person. No lifetime maximum.

5. Exceptions, Reductions, and Limitations of the Policy (policy is not a daily hospital expense plan):

A. Aflac will not pay benefits for care or treatment that is: (1) caused by a Pre-existing Condition, unless the loss is incurred more than 12 months after the Effective Date of coverage, or (2) received prior to the Effective Date of coverage.

B. Aflac will not pay benefits whenever coverage provided by the policy is in violation of any U.S. economic or trade sanctions. If the coverage violates U.S. economic or trade sanctions, such coverage shall be null and void.

C. Aflac will not pay benefits whenever fraud is committed in making a claim under the coverage. If you have received benefits that were not contractually due under the coverage, then Aflac reserves the right to offset any benefits payable under the coverage up to the amount of benefits you received that were not contractually due.

D. Aflac shall not be liable for any loss to which a contributing cause was your commission of or attempt to commit a felony or to which a contributing cause was your being engaged in an illegal occupation.

E. The policy does not cover losses caused by or resulting from:

1. Giving birth if pregnancy is in existence on the Effective Date of coverage, including any resulting Complications of Pregnancy or maternal-fetal intervention procedure. For pregnancy beginning on or after the Effective Date of coverage, Complications of Pregnancy are covered to the same extent as a Sickness;

2. Receiving routine nursing or routine well-baby care for a newborn child;
3. Using any narcotic (unless administered on the advice of a Physician and taken according to the Physician's instructions), or voluntarily taking any type of poison or inhaling any type of gas or fumes;
4. Intentionally self-inflicting a bodily injury, except that the policy may not exclude benefits otherwise provided by the policy for treatment on the basis that the need for health care arose out of a suicide or suicide attempt;
5. Having dental treatment, except as a result of Injury;
6. Having cosmetic surgery that is not Medically Necessary;
7. Having elective surgery that is not Medically Necessary within the first 12 months of the Effective Date of coverage;
8. Being exposed to war or any act of war, declared or undeclared, or actively serving in any of the armed forces, or units auxiliary thereto, including the National Guard or Reserve;
9. Actively participating in a riot, insurrection, or terrorist activity;
10. Donating an organ within the first 12 months of the Effective Date of coverage; or
11. Mental or emotional disorders, including but not limited to the following: bipolar affective disorder (manic-depressive syndrome), delusional (paranoid) disorders, psychotic disorders, somatoform disorders (psychosomatic illness), eating disorders, schizophrenia, anxiety disorders, bereavement, situational depression, depression, stress, or post-partum depression. The policy will pay, however, for covered losses resulting from Alzheimer's disease, or similar forms of senility or senile dementia, first manifested while coverage is in force.

A "Pre-existing Condition" is an illness, disease, infection, disorder, pregnancy, condition, or injury for which, within the 12-month period before the Effective Date of coverage, prescription medication was taken or medical testing, advice, consultation, or treatment was recommended or received. Care or treatment caused by a Pre-existing Condition will not be covered unless the loss is incurred more than 12 months after the Effective Date of coverage.

- 6. Renewability:** The policy is guaranteed-renewable for your lifetime by the timely payment of premiums at the rate in effect at the beginning of each term, except that we may discontinue or terminate the policy if you have performed an act or practice that constitutes fraud, or have made an intentional misrepresentation of material fact relating in any way to the policy, including claims for benefits under the policy. Aflac may change the established premium rate, but only if the rate is changed for all policies of the same form number and premium classification in the state where the policy was issued that are then in force.

RETAIN FOR YOUR RECORDS.

THIS IS ONLY A BRIEF SUMMARY OF THE COVERAGE PROVIDED.

REFER TO THE POLICY AND RIDER(S) FOR COMPLETE DEFINITIONS, DETAILS, LIMITATIONS AND EXCLUSIONS.

TERMS YOU NEED TO KNOW

COVERED PERSON: Any person insured under the coverage type that you applied for on the application: individual (named insured listed in the Policy Schedule), named insured/spouse only (named insured and spouse), one-parent family (named insured and dependent children), or two-parent family (named insured, spouse and dependent children). Spouse is defined as the person to whom you are legally married and who is listed on your application. Newborn children, including dependent grandchildren who reside with a covered grandparent continually from birth, are automatically insured for 30 days from the moment of birth. If coverage is for individual or named insured/spouse only, please inform Aflac of the child's birth as soon as possible for the child to be added to the policy and Aflac will convert the policy to one-parent family or two-parent family coverage and advise you of the additional premium due, if any. Aflac may withhold payment of any benefits for the newborn child until Aflac has been compensated with the applicable premium which would have been owed if Aflac had been informed of the additional newborn child immediately. Coverage will include any other dependent child, regardless of age, who is incapable of self-sustaining employment by reason of mental illness or disorder, physical disability, or developmental disability, and who became so disabled prior to age 26 and while covered under the policy. Dependent children are your natural children, including dependent grandchildren who reside with a covered grandparent continually from birth, stepchildren, or children placed with you for adoption who are under age 26. Children for whom you must provide medical support under a court order or children for whom you or your spouse have been appointed as legal guardian are also covered to the extent dependent children are covered.

EFFECTIVE DATE: The date(s) coverage begins as shown in the Policy Schedule or any attached endorsements or riders. The effective date is not the date you signed the application for coverage.

HOSPITAL CONFINEMENT: A stay of a covered person confined to a bed in a hospital for 23 or more hours for which a room charge is made. The hospital confinement must be on the advice of a physician, medically necessary and the result of a covered sickness or injury. Treatment or confinement in a U.S. government hospital does not require a charge for benefits to be payable.

INJURY: A bodily injury caused directly by an accident, independent of sickness, disease, bodily infirmity or any other cause. An injury must occur on or after the effective date of coverage and while coverage is in force for benefits to be payable. See the Limitations and Exclusions section for injuries not covered by the policy.

PERIOD OF HOSPITAL CONFINEMENT: The number of days a covered person is assigned to and incurs a charge for a room in a hospital. Confinements must begin while coverage under the policy is in force. Hospitalization that begins prior to the end of one calendar year and continues into the next calendar year will be considered one confinement.

PERIOD OF HOSPITAL INTENSIVE CARE UNIT CONFINEMENT: The number of days a covered person is assigned to and incurs a charge for a room in a hospital intensive care unit. Confinements must begin while coverage under the rider is in force. Hospitalization that begins prior to the end of one calendar year and continues into the next calendar year will be considered one confinement.

SICKNESS: An illness, disease, infection, disorder or condition not caused by an injury, medically evaluated, diagnosed or treated by a physician on or after the effective date of coverage and while coverage is in force.

ADDITIONAL INFORMATION

An ambulatory surgical center does not include a physician's or dentist's office, a clinic or other such location.

The term hospital does not include any institution or part thereof used as an emergency room; a rehabilitation facility; a hospice unit, including any bed designated as a hospice or a swing bed; a convalescent home; a rest or nursing facility; a psychiatric unit; an extended-care facility; a skilled nursing facility; or a facility primarily affording custodial or educational care, care or treatment for persons suffering from mental disease or disorders, care for the aged, or care for persons addicted to drugs or alcohol. Benefits for confinement in a rehabilitation facility are payable under the Rehabilitation Facility Benefit.

The term hospital intensive care unit does not include units such as telemetry or surgical recovery rooms, postanesthesia care units, progressive care units, intermediate care units, private monitored rooms, observation units located in emergency rooms or outpatient surgery units, step-down intensive care units, or other facilities that do not meet the standards for a hospital intensive care unit.

The term hospital emergency room does not include urgent care centers.

The term rehabilitation facility does not include a hospice unit, including: any bed designated as a hospice or a swing bed; a convalescent home; a rest or nursing facility; a psychiatric unit; an extended-care facility; a skilled nursing facility; or a facility primarily

affording custodial or educational care or treatment for persons suffering from mental disease or disorders, care for the aged or care for persons addicted to drugs or alcohol.

The term urgent care center does not include hospital emergency rooms.

Admissions into the emergency room of a hospital, admissions for same day surgical procedures or admissions for observation are not considered a hospital admission.

A physician or psychologist is not you or a member of your immediate family.

The policy does not cover losses caused by or resulting from giving birth if pregnancy is in existence on the effective date of coverage, including any resulting complications of pregnancy or maternal-fetal intervention procedure. For pregnancy beginning on or after the effective date of coverage, complications of pregnancy are covered to the same extent as a sickness. Complications of pregnancy do not include any of the following: premature delivery, multiple gestation pregnancy, false labor, occasional spotting, prescribed rest during pregnancy, morning sickness, and similar conditions associated with the management of a difficult pregnancy not constituting a classifiably distinct pregnancy complication. Cesarean deliveries are not considered complications of pregnancy. For pregnancy beginning on or after the effective date of coverage, complications of pregnancy are covered to the same extent as a sickness, subject to the Limitations and Exclusions.



Aflac SmartClaim®
One Day PaySM

aflac.com || 1.800.99.AFLAC (1.800.992.3522)

One Day PaySM available for most properly-documented, individual Hospital claims submitted online through Aflac SmartClaim® by 3 p.m. ET. Aflac SmartClaim® not available on all products. Processing time is based on business days after all required documentation needed to render a decision is received and no further validation and/or research is required. Individual Company Statistic, 2016.

Underwritten by:
American Family Life Assurance Company of Columbus
Worldwide Headquarters | 1932 Wynnton Road | Columbus, Georgia 31999

